

TOWNSVILLE ORCHID SOCIETY INC



JANUARY 2013 BULLETIN

Full contact details are on our web site <http://townsvilleorchidsociety.org.au>

TOS Inc. Directory of useful information:

Postal Address:
PO Box 836 D.C.
AITKENVALE QLD 4814
Ph: 07 47734208

Hall Location:
Joe Kirwan Park
Charles Street
KIRWAN QLD

Meetings are held 8pm
on the 4th Friday of each
month except December
in the Townsville Orchid
Society Inc. Hall

General Meeting
Friday 25th January
at 8.00 pm

Novice/New Growers'
Sunday 27th January
at 1.00pm

Next Management
Committee Meeting:
Friday 8th February
at 7.30 pm

Patron:	Phyllis Merritt	
President:	Wal Nicholson	Ph: 07 47734208
Secretary:	Jean Nicholson	Ph: 07 47734208
		Email: walandjean@bigpond.com
Assistant		
Treasurer:	Charles Lee	Ph: 07 4778 4815
VP Show:	Marie Bloom	Home: 07 47783497
VP Bulletin:	Alis Siarni	Mobile: 0406548057

TOS CALENDAR 2013

January 2013 25 – General Meeting at 8.00 pm
27 – Novice /New Growers' Meeting – 1.00pm

February 2013 08 - Management Committee Meeting – 7.30pm

Annual Membership Fees

City Family	\$18.00	Pensioner Family	\$9.00
City Single	\$14.00	Pensioner Single/Junior	\$7.00

Details for paying membership fees: BSB: 064823 Account Number: 0009 0973
Name of Account: Townsville Orchid Society Inc. Commonwealth Bank, Aitkenvale
Fees are due 1st September each year.

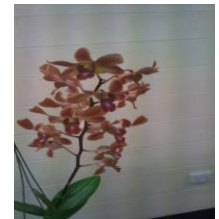
TOS - 2013 SHOW DATES

Autumn – 5, 6, & 7 April

Winter – 21, 22 & 23 June

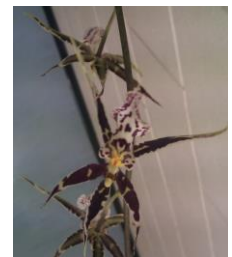
Spring 13, 14 & 15 September

TOS Members: if you would like to receive the TOS Bulletin by email you can email me on the following email address:
siarni@gmail.com



Den. Miracle Brown

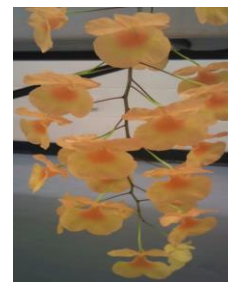
W&J Nicholson



Brsdm. Golden Mine
C & J. Lee



Encyclia Belizensis x
Encyclia Belizensis
(sibling)
Marie Bloom



Den. Lindleyii
G. Christophers &
A. Siarni

JUDGES FOR JANUARY & FEBRUARY

JANUARY

MASTERS AND OPEN
NOVICE SPECIES

K. GREENWAY
A. HUGHES

O. KROGH
W. SEWELL

FEBRUARY

MASTERS AND OPEN
NOVICE SPECIES

D. BENSON
T. BOON

R. DAVESON
C. TRUSCOTT

PRESIDENT'S MESSAGE

Your Secretary and President had a pretty quiet festive season but an enjoyable one. Hoping that you all had a great time. It was a blow at the end of it to learn of Jill Lee's demise and we extend our heartfelt condolences to Charles and Family. On the other hand it was pleasing to see so many members attend Jill's funeral.

During the break I took the opportunity to bring a load of Quincan gravel from the Tableland so that a number of bags are again on hand for members.

I also endeavoured to brighten up the entrance to our hall by painting the ramps and railings to our two main doorways, as well as repainting the front doors. I think it looks one hundred percent. The Council has agreed to irrigate our lawn subject to our paying 60% (\$2,600 roughly), but they will own the system and maintain it and pay for the water. It is somewhat demanding of them but will save me considerable bother and time.

We had our first full electricity account since completion of our solar power installation – saved more than five hundred dollars.

We have held our first Committee Meeting for the year and are ready to go for it. We will seek an updated quote for air-conditioning, but may have to wait a little while for installation, with the demand increasing due to the ungodly hot spell. It is interesting to see that southern climes are coping it more so than we are.

Don't forget we have re-introduced the Sales Table at our monthly meetings – Friday nights – we couldn't fit one on Sunday arvos. Bring along your surplus/for sale plants on Friday night. Please read notice in Bulletin.

Chris Cobb of Cairns will be our Guest Speaker at February's meeting. Chris has visited us before and is very interested in the N.Q. Native Orchids. He gave a well presented talk at the W.O.C. In Singapore in 2011 and will enlarge his talk to cover additional information. Come along on Friday 22nd February to listen.

Looking forward to seeing you all next weekend. Best Wishes for a great year ahead.

Wal Nicholson

SALE OF PLANTS AT FRIDAY MEETING

Bring along your surplus/for sale plants on Friday night, ensuring that they each bear a name tag as well as a price tag with your number and price on it. Quality plants, free of disease etc. - and in respectable pots or mounts only please.

VALE JILL LEE

It is with great sadness that we advise of the death of our Member Jill (wife of Assistant Treasurer Charles) unexpectedly on 7 January. We extend our Deepest Sympathy to Charles and Family.

NOVICE/NEW GROWERS REPORT

We trust you all had a wonderful and joyful Christmas with your family and friends, and now as a whole new year stretches out before us again, so we trust that there will be a goodly portion of things to encourage, interest, stimulate, please, prosper and satisfy each one of us along the way. Our activity programme is designed to accommodate all manners of tasks and we do encourage all our members to avail themselves of our planned activities.

We look forward to see you all bring along your flowering orchids for the Popular Voting Competition this coming year, the overall winners for 2012 were in the Novice Section, First Peter Lucke: Second Janeen Deliseo and Frank Ostrowski and Third was Peter Cooper. The winner in the Open Section, First Wal & Lyn Carlill, Second Place was a tie between Neita Coulson and Ann Scholl. Many thanks to all the members who brought along their flowering plants for this competition during year 2012.

On Sunday, 25th November 2012, 98 members and friends of the Novice/New Growers Group met at the Townsville Orchid Society Inc, Hall, Charles Street, Kirwan for their annual Christmas Luncheon. Once again we would like to thank everybody for their generous support for this wonderful event and for the many gifts that you all donated towards our enormous Multi Raffle Table and Ticket Sales. Also we would like to take this opportunity to thank all our Guest Speakers throughout the year, who so willingly gave up their time, knowledge and a few little secrets of their own on how to grow and care for our orchids better in the future. We wish everybody a Happy New Year and we look forward to seeing you all at our next meeting on Sunday, 27th January, starting approximately 1.00pm and to again see and admire some wonderful orchid flowers in 2013. Warren & Clara

MINUTES FROM GENERAL MEETING HELD ON 23.11.2012

Meeting Opened: 8pm. By President W Nicholson who welcomed all to final shortened meeting for 2012, celebrating with a special supper to follow any business. He also thanked members, especially E Boon for donations to the raffle table. G Christophers presented a list to be circulated to check any incorrect emails, used for posting of bulletin.

Minutes: of previous meeting Moved as a True Record by T Phillips. Seconded by N Grant. Carried.

Correspondence: Inwards: NQN Newspaper; Southern Cross; House of Champions/A/c's for payment; L Kennedy & F Ames/Annual Fees/Christmas Lunch; CBA Statement/New Checkbook; Weightwatchers/Invoice; Fitzgerald's Funerals/receipt; Sonia/query re Society; TDO&APA/Invitation to Christmas Party 8/12/12/AGM Information; AOC/connecting with societies; S&M Fay/Thank you card; TQOC Inc./Christmas card; Signet/brochure; J Knowles forwarded bulletins; W Sewell/contacts re luncheon; Hall Hire/several emails; Australian Charities & Not-for-Profit Task Force/Update. **Outwards:** House of Champions/answer; W Sewell/contacts re luncheon; Hall Hire/several emails; Other Society Bulletins; AOS Orchids; Supplement Cycnoches Species & Hybrids; The Orchadian; AOF Booklet "A Foundation in Orchid Workshop 2010 – donated by T.Q.O.C. Inc.

Moved by J Nicholson that Inwards Correspondence be Received and Outward Correspondence be Confirmed. Seconded by L White. Carried.

Business Arising From Correspondence: AC & Not-for-Profit Task Force Update does not concern our Society; A/c's attended to.

Treasurer's Report: given by C Lee who Moved Receipt of Report and Confirmation of Cheques Paid. Seconded by S Fay. Carried. Almost financial to instal air-conditioning. Still looking for a new cleaner.

Novice/New Growers Report: given by W Sewell – 98 members attending lunch tomorrow. Attend at 12md – meal will be served at 12.30pm. All donations to raffle table gratefully received.

Registrar's Choice Certificates: presented to W&C Sewell/Hybrids; A Steel/Species and W&J Nicholson /Best Specimen.

Registrar's Choice: Hybrids: Tie: Brsdm. Golden Mine owned by C&J Lee and Den. Miracle Brown, owned by W&J Nicholson, with both plants gaining 79 Points. Species: Tie: *Den. lindleyii* owned by G Christophers and A Siarni and *Enc. belizensis* owned by M Bloom with both gaining 79 Points. Congratulations to all growers.

General Business: C Lee announced new name badges had arrived at \$7.30 each but club shirts are not available as yet.

J Knowles advised that C. Dal's Charm has been changed to Swan's Charm.

W Nicholson thanked for members who filled some positions on Committee – still a few vacant. He wished all a Merry Christmas and Happy New Year.

Management Committee: will meet on 11.1.2013.

Break for extended Tea break with Lucky Door and Raffle to be drawn during the break.

Meeting Closed: 9.15pm

No.	Name	POINTS			26.10.12	
		Veterans	Open	Novice	Species	Aggregate
135	Blanchard - Brendon & White - Lynne				1	1
118	Bloom - Marie		5		7	12
68	Cairns - June & Stacey		16			16
85	Christophers - Grant & Siarni - Alis			4	1	5
213	Grant - Noel & Maureen	17			40	57
58	Googh - Stephen & Fran			12		12
106	Hardwick - Noel		6			6
193	Knowles - Jeff & Alison	10			7	17
81	Lee - Charles & Jill	4			5	9
71	Lucke - Peter & Joanne			1		1
167	MacIntyre - Ross & Joan		9		1	10
77	Marnock - Fred & Donna		13		3	16
147	Nicholson - Wal & Jean	99			75	174
96	Phillips - Tina			11		11
172	Sewell - Warren & Clara	19			11	30
216	Steel - Alf	2			9	11

TABLED PLANTS 23.11.2012

Veterans

Phragmipediums

- Phrag.* Praying Mantis
W&J Nicholson
Phrag. Eric Young W&J Nicholson
Phrag. Green Hornet W &J Nicholson

Paphiopedilums

- Paph.* Saint Swithin
W&J Nicholson
Paph. Coos W&J Nicholson
Paph. primulinum x philippinense
W&J Nicholson

Vandaceous - Miscellaneous

- V.* Kampirananda x *Ascda* Seachang
W&J Nicholson
Vasco. Pine Rivers Charles Lee
V. Golden Doubloon N&M Grant

Aerides

- Aer.* Fuch's Charm N&M Grant
Aer. Bangkok W&J Nicholson
Aer. krabiense x fieldingii
N&M Grant

Cattleya- Miscellaneous

- Catt.* X Venosa N&M Grant

Blc. Waikiki Gold x *Ctna.* Keith Roth
W&J Nicholson
Blc. Waikiki Gold x *Ctna.* Keith Roth
W&J Nicholson

Miscellaneous

- Ctism.* Cape of Island x *pileatum*
W&J Nicholson
C. Unknown x *Schom.* Unknown
W&J Nicholson

Epidendrum

- Epi.* Justin Esdale x *Enc. atropurpureum*
W&J Nicholson
Epi. Bees Knees W&J Nicholson

Epi. Justin Esdale x *Enc. atropurpureum*
W&J Nicholson

Oncidium

- Brsdm.* Golden Gamine 'White Knight'
Charles Lee

- Wils.* Golden Afternoon 'Rich Yellow'
W&J Nicholson
Beallara. Peggy Ruth Carpenter
W&J Nicholson

Dendrobium

- D.* Miracle Brown W&J Nicholson
D. MasakaTaki 'Blue' W&J Nicholson
D. Norman Dan W&J Nicholson

OPEN

Miscellaneous

- Blc.* Dal's Kew 'Drummer Boy' x *Blc.*
Dal's Charm
R&J McIntyre
Mtssa. Aztec Toni R&J McIntyre
Cat. El Patio Marie Bloom

SPECIES

Aerides

- Aer. houlettiana* 'Lauren' C. Lee
Aer. houlettiana 'Lauren' N&M Grant
Aer. houlettiana 'Lauren' W&J Nicholson

Vandaceous - Miscellaneous

- Rhy. Retusa* 'Pink' N&M Grant
Smitinandia micrantha N&M Grant
Asctm. ampullaceum W&J Nicholson

Encyclia

- Enc. belizensis* Marie Bloom
Enc. belizensis R&J McIntyre

Cattleya

- C. guttata* var. *leopoldii* N&M Grant
C. intermedia var. *amethystina* x var.
suavissima N&M Grant
C. forbesii var. *aurea* N&M Grant

Miscellaneous

- Blc.* (Waianaes Treasure x *Sc.*Beaufort) x
Pot. Paul Phelps
G.Christophers & A.Siarni
Den. formosum W&J Nicholson
Den. chrysotoxum var. *suavissimum*
W&J Nicholson

Bulbophyllum

Bulb. lobbii W&J Nicholson
Bulb. biflorum W&J Nicholson

Miscellaneous

Paph. primulinium W&J Nicholson
Erycina pusilla C. Lee
Cym. finlaysonianum
W&J Nicholson

Australian Natives

Bulb. baileyii W&J Nicholson
Pomatocalpa marsupiale
N&M Grant
Pomatocalpa marsupiale W&J Nicholson

NOVICE**Miscellaneous**

Lc. Canhamiana 'coerulea' X Azure Skies
Tina Phillips
Den. Jade S&F Googh
Den. Burnda Jade T. Phillips

Phalaenopsis

Phal. unknown S&F Googh
Dtps. Autumn Sun 'Amy Lee S&F Googh
Phal. unknown S&F Googh

EDITOR'S NOTES

A very happy New Year to all TOS members. May you all enjoy a year of peace, love and happiness. And, of course, may all our orchids bring forth beautiful blooms. In the Chinese calendar, this is the year of the Snake.

Please note: For those TOS members who have ordered shirts, they have now arrived. Please ensure that you pay and pick up your shirt from Charles Lee by Friday, 25th January, 2013. Your co-operation in ensuring your order is picked up on time would be appreciated.



Laelia purpurata var flammea, carnea, sanguinea

Laelia purpurata (Lindl. & Paxton) 1852 (Now *Cattleya purpurata*)

This important orchid was discovered in 1846 in Southern Brazil by Francois Devos, who sent plants to Ghent, Belgium. It was subsequently named by John Lindley. The genus was also named by him (in 1831), but the meaning of the name Laelia is unclear – it is thought it may be the name of one of the Vestal Virgins, who tended the temple fire in honour of the ancient Roman Goddess Vesta. 'Purpurata' means 'purple-stained'.

Laelia purpurata has many colour forms, to the extent that more than 150 named clones are known. In fact, in Santa Catarina, the Brazilian home state of the orchid, some orchid shows are devoted only to plants of this species! Because of the many colour varieties, it has become an important orchid for hybridizing.

The Brazilian Laelias were originally separated from Cattleyas because Laelias have 8 pollinia whereas Cattleyas have 4 pollinia. This decision has recently been reversed because of DNA research. It should be remembered that the Mexican Laelias remain as Laelias.

Laelia purpurata grows well in Townsville, as long as it is given a definite winter rest. And DO NOT over-water it. Like others in the Cattleya family, it will quickly grow into a large plant with an attractive display of flowers.

I have several varieties, three of which are shown in the photograph:
(from the left) Var. *flammea* (named for the streaks ('flames') in the petals), var. *sanguinea* ('blood-coloured') and var. *carnea* ('flesh-coloured').

Noel Grant December 2012

References: "Growing Orchids" Book Two – the Cattleyas and other epiphytes, J.N. Rentoul 1987

"The Cattleyas and Their Relatives" Vol. II The Laelias, Carl L. Withner 1998

The Internet Orchid Species Photo Encyclopedia <http://www.orchidspecies.com/>

While the Townsville Orchid Society Inc. endeavours to ensure reliability and accuracy in this Bulletin editorial content, responsibility for advice and views expressed is not assumed by the Society nor the Management Committee. All photographs are by J Nicholson unless indicated otherwise.

ENVIRONMENTALLY FRIENDLY

SEASOL – Planting Gel

Improves plant establishment.



Contains Seasol & essential nutrients.

Stores water & nutrients at root zone.